



RE/MAX

TREELAND REALTY

NANCY PINCHIN

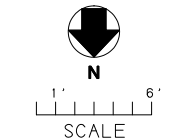
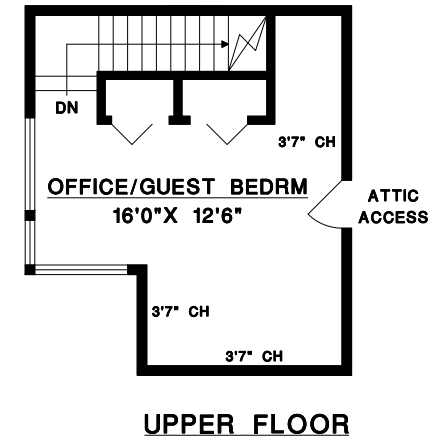
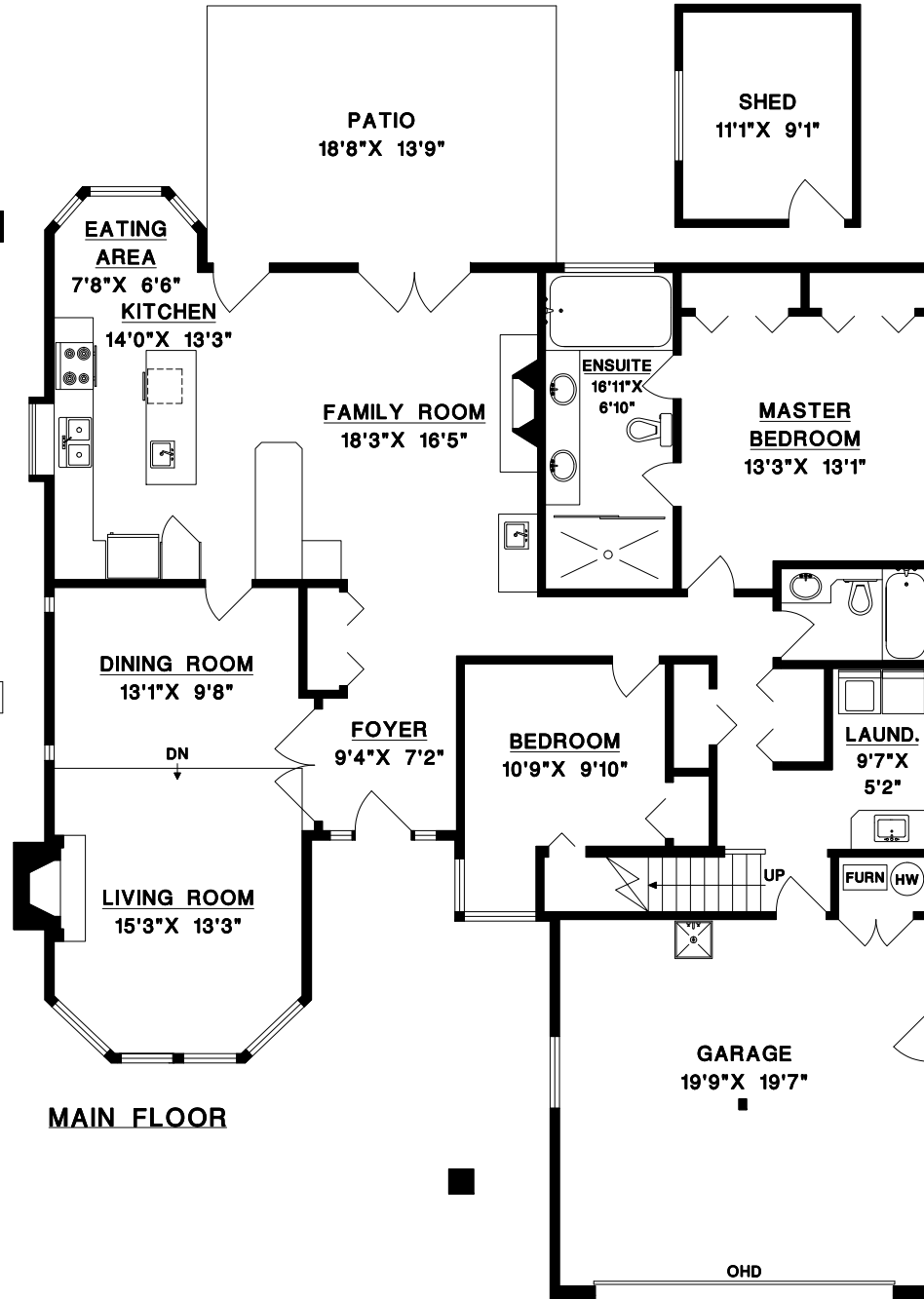
BUS: 604-533-3491

18760 59TH AVENUE,
SURREY, B.C.

* UPPER FLOOR	297	SQ. FT.
MAIN FLOOR	1771	SQ. FT.
FINISHED AREA	2068	SQ. FT.

GARAGE	423	SQ. FT.
SHED	119	SQ. FT.
PATIO	257	SQ. FT.

* Includes limited ceiling heights.



MEASURE MASTERS
SURREY/WHITE ROCK
(604) 539-0285
DRAWN: AUGUST 2010