



**RE/MAX**  
TRELAND REALTY

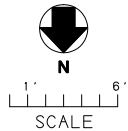
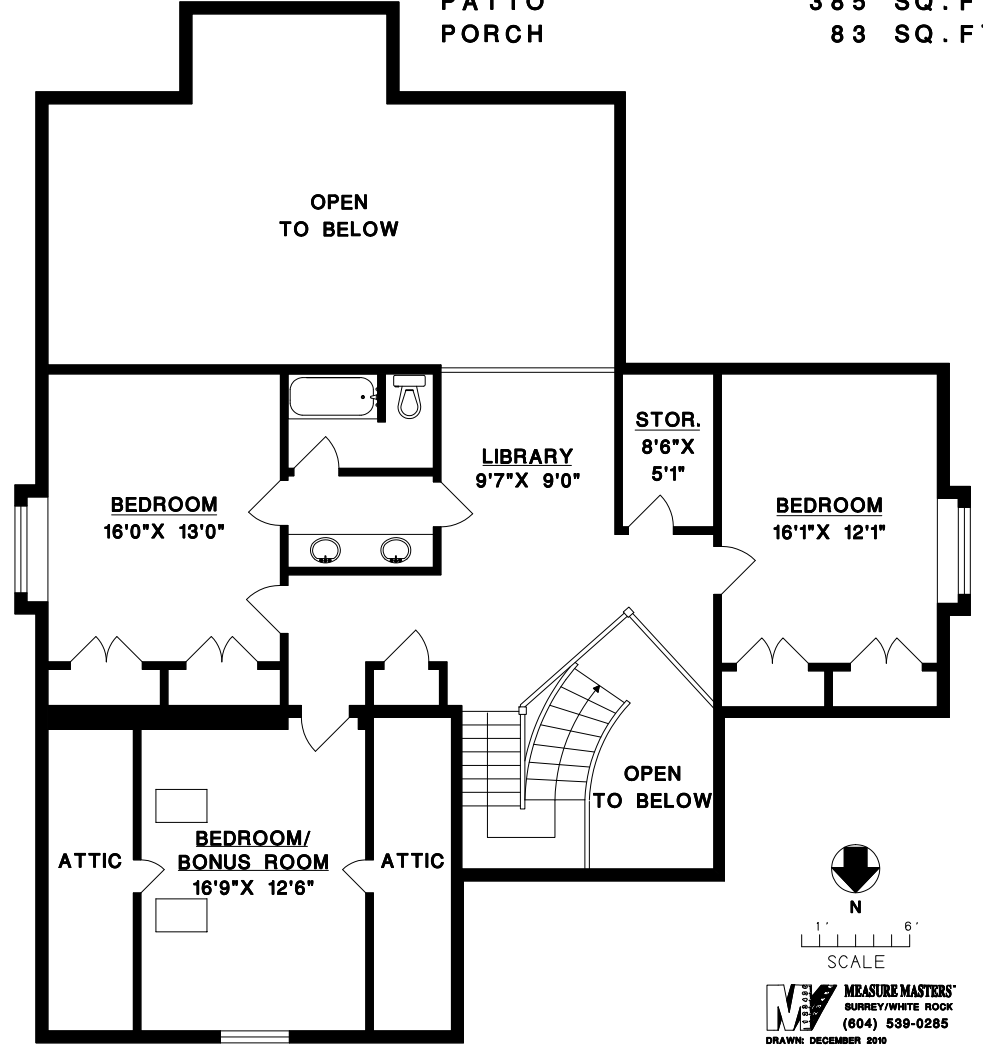
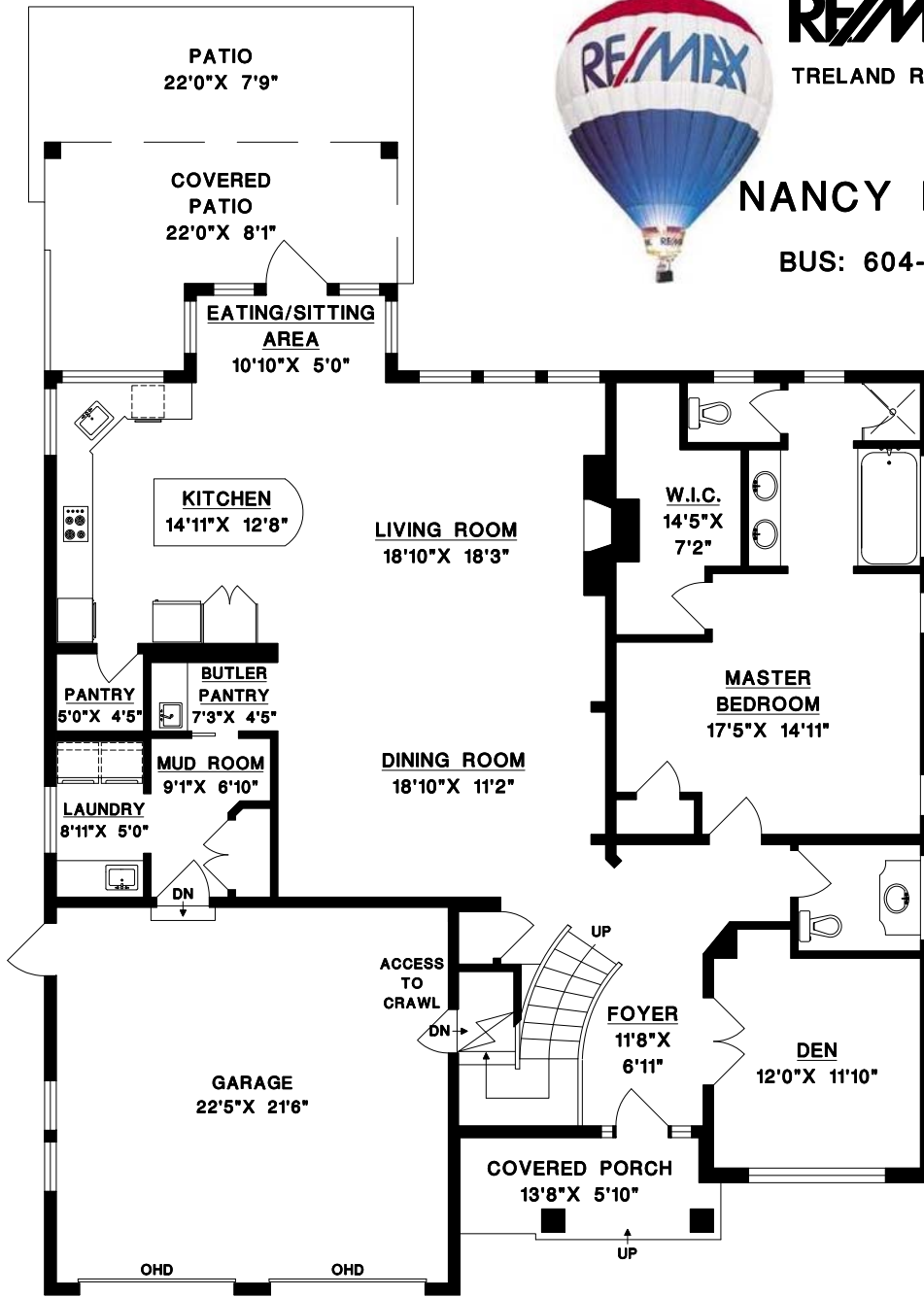
21882 52ND AVENUE,  
LANGLEY, B.C.

**NANCY PINCHIN**

BUS: 604-533-3491

UPPER FLOOR	1288	SQ. FT.
MAIN FLOOR	2016	SQ. FT.
<b>FINISHED AREA</b>	<b>3304</b>	<b>SQ. FT.</b>

GARAGE	518	SQ. FT.
PATIO	385	SQ. FT.
PORCH	83	SQ. FT.



**MEASURE MASTERS**  
SURREY/WHITE ROCK  
(604) 539-0285  
DRAWN: DECEMBER 2010