



**RE/MAX**  
TREELAND REALTY

**NANCY PINCHIN**

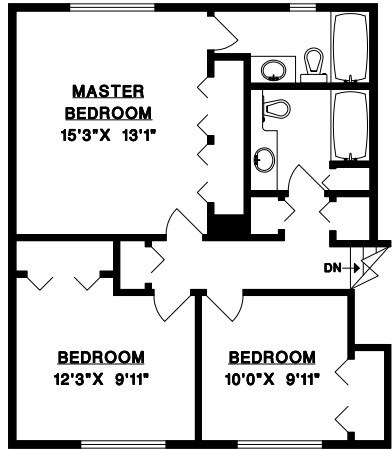
BUS: 604-533-3491



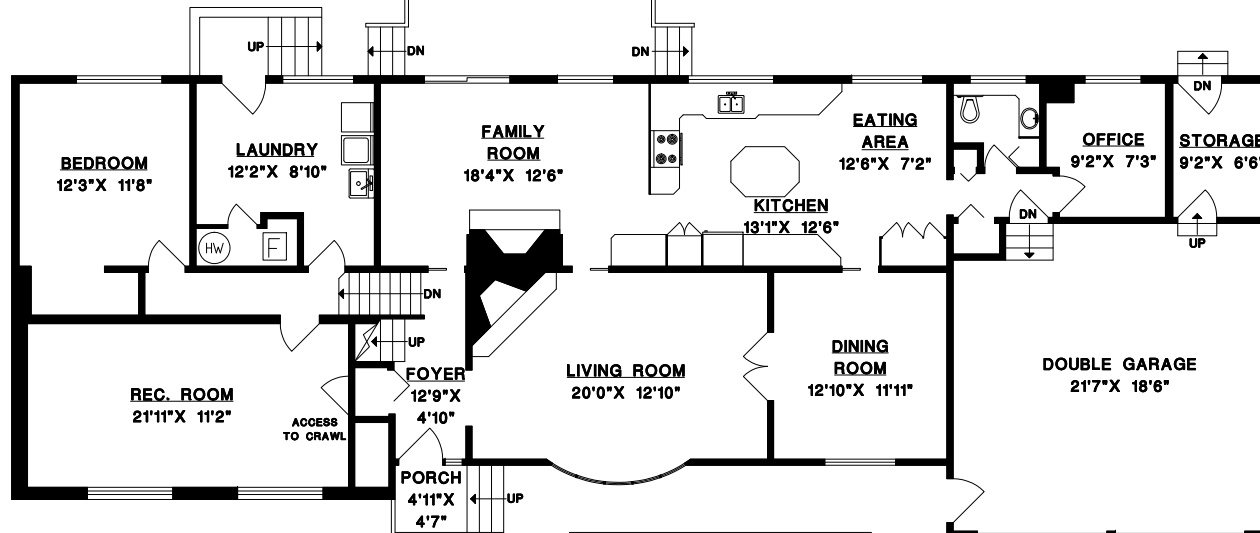
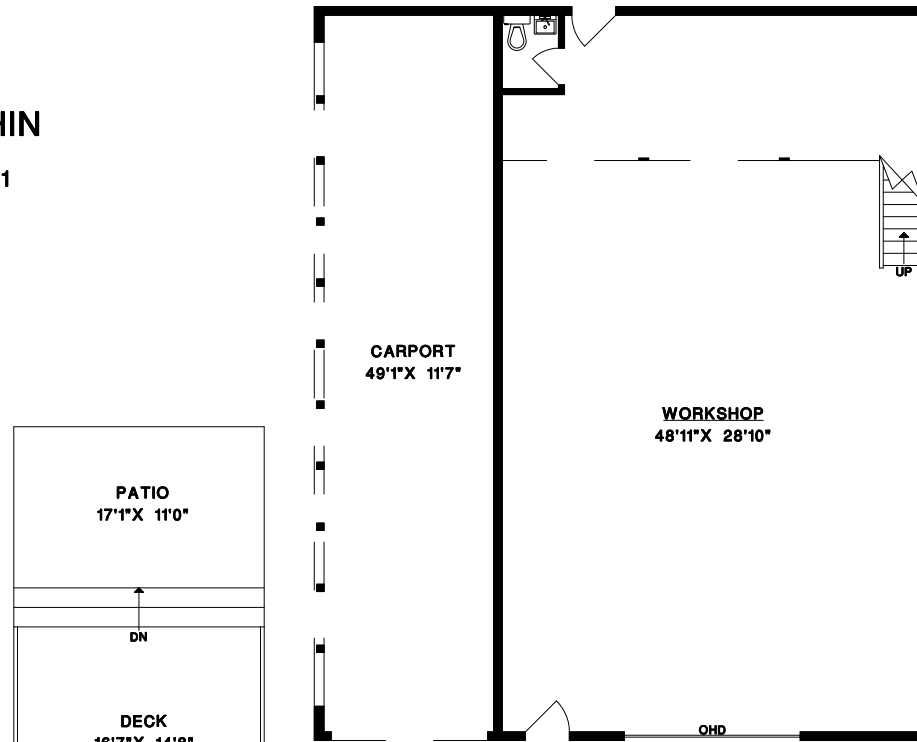
**RE/MAX**  
ALDERCENTER REALTY

**RAY BERNIER**

BUS: 604-857-1100



**UPPER FLOOR**



**MAIN & LOWER FLOOR**

**24371 50TH AVENUE,  
LANGLEY, B.C.**

UPPER FLOOR	766	SQ. FT.
MAIN FLOOR	1299	SQ. FT.
LOWER FLOOR	709	SQ. FT.
<b>FINISHED AREA</b>	<b>2774</b>	<b>SQ. FT.</b>

GARAGE	464	SQ. FT.
WORKSHOP	1502	SQ. FT.
CARPORT	614	SQ. FT.
DECK	245	SQ. FT.
PATIO	188	SQ. FT.
PORCH	23	SQ. FT.



1" = 6'  
SCALE

**MEASURE MASTERS**  
SURREY/WHITE ROCK  
(804) 539-0285  
DRAWN SEPTEMBER 2011