



RE/MAX
TREELAND REALTY

NANCY PINCHIN

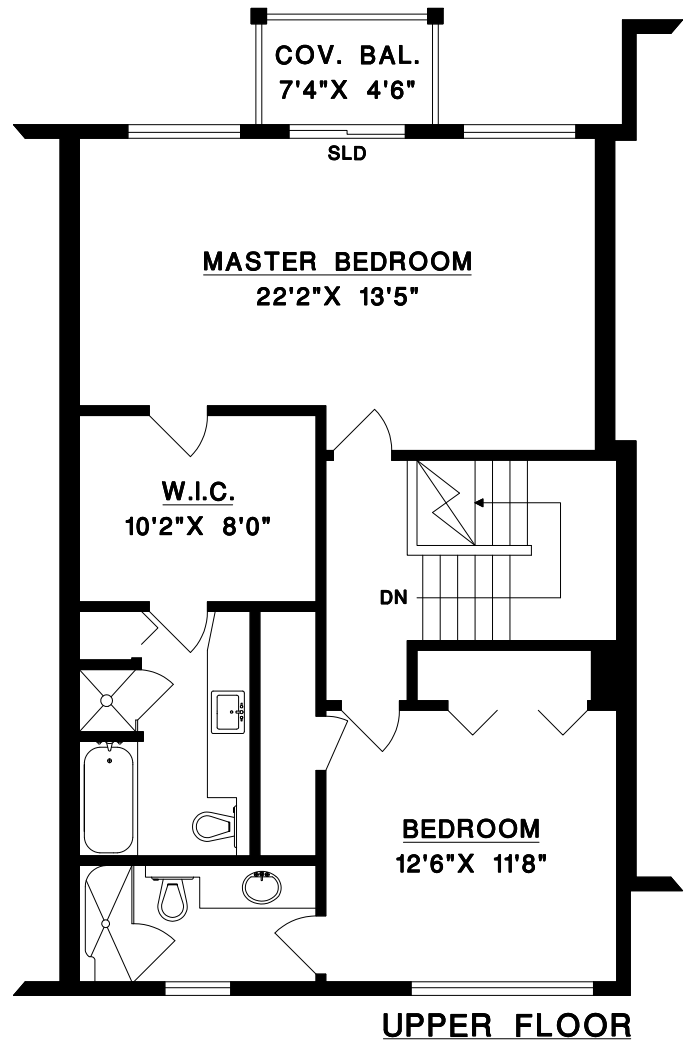
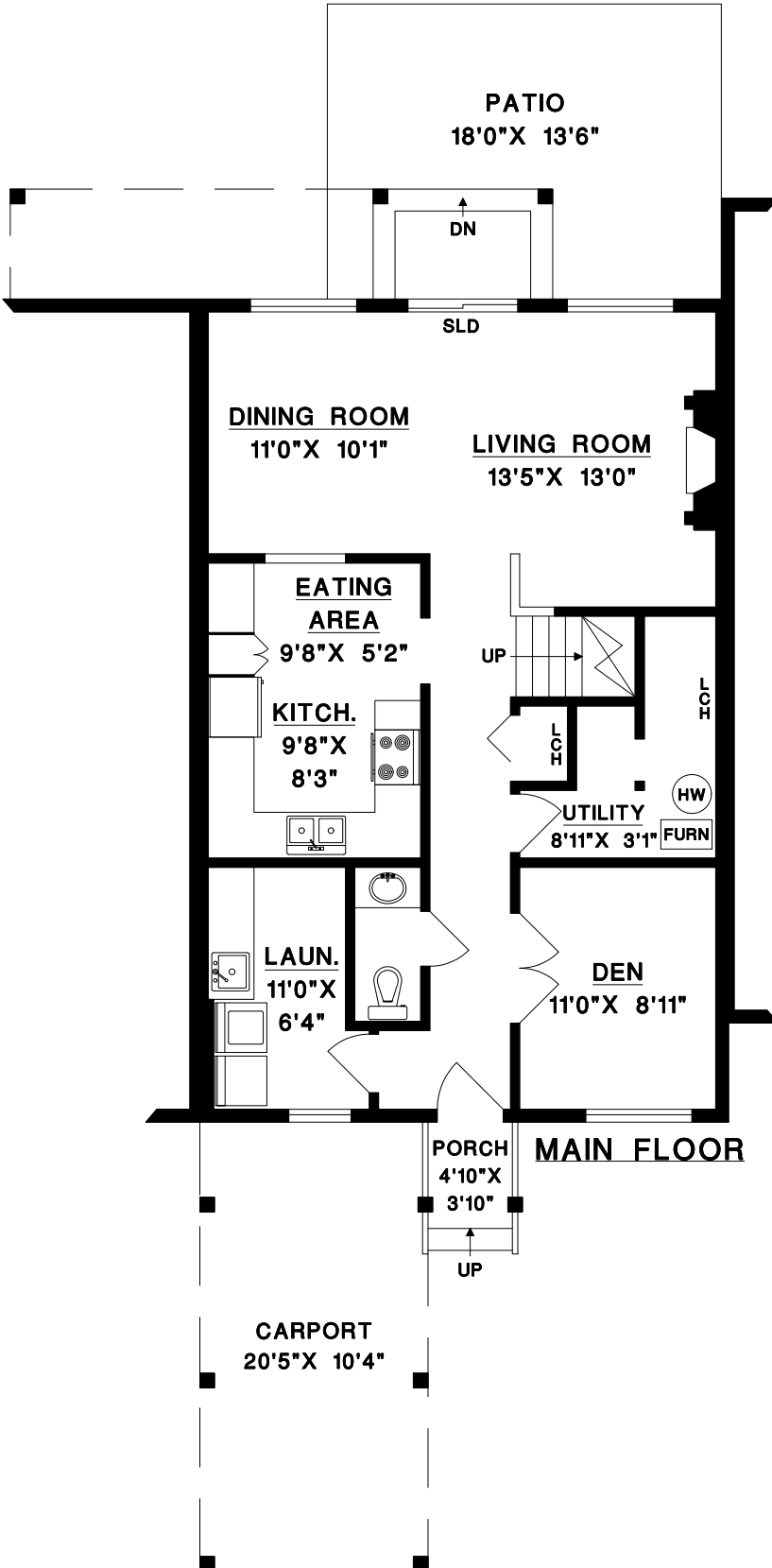
BUS: 604-533-3491

#2 - 20484 53RD AVENUE,
LANGLEY, B.C.

UPPER FLOOR	883	SQ. FT.
* MAIN FLOOR	896	SQ. FT.
FINISHED AREA	1779	SQ. FT.

CARPORT	212	SQ. FT.
BALCONY	33	SQ. FT.
PATIO	243	SQ. FT.
PORCH	19	SQ. FT.

* Includes limited ceiling heights.



1' 6'
SCALE

MEASURE MASTERS
SURREY/WHITE ROCK
(604) 539-0285
DRAWN: JULY 2011